

# Egg Flow Control

Manage your egg flow  
more efficiently

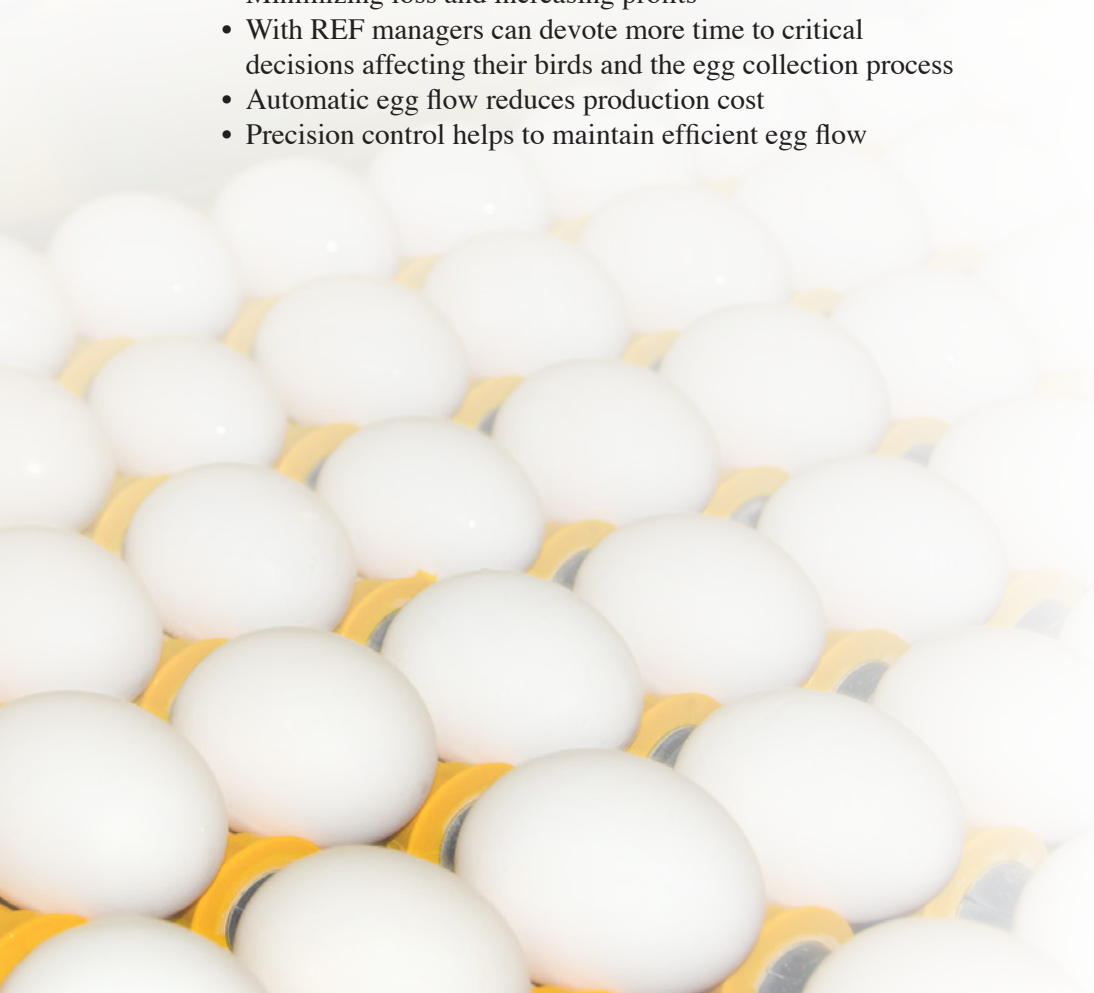
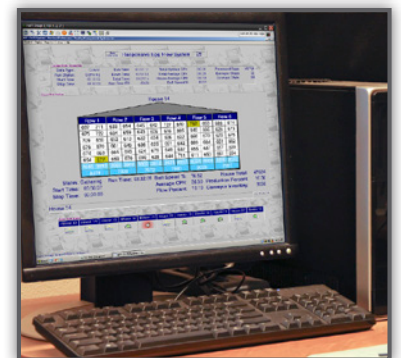
*Precision egg  
collection*

**Responsive Egg Flow (REF)** is a unique, money saving system that electronically counts and controls the flow of eggs from the hen house to the processing equipment.

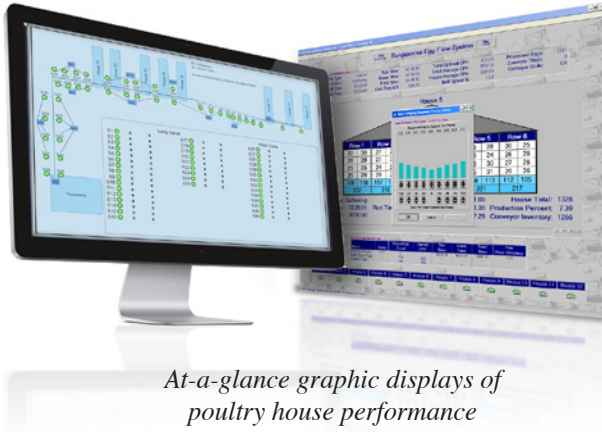
A farm-tested, user-friendly system, **REF** helps to reduce shell damage by gathering all houses simultaneously or in batches, **REF** automatically regulates belt speeds to provide smooth egg flow to the plant.

#### **Benefits:**

- Minimizing loss and increasing profits
- With REF managers can devote more time to critical decisions affecting their birds and the egg collection process
- Automatic egg flow reduces production cost
- Precision control helps to maintain efficient egg flow



# Take command of your egg flow process.



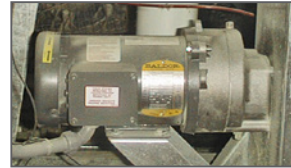
At-a-glance graphic displays of poultry house performance



Egg counter



Variable frequency controller



High-efficiency motor

## PMSI's Egg Flow System Offers Unique Management Options

- Support for enhanced speed reduction via row, tier, or house switching
- Egg timeout alerts on-screen
- Available local (in-house) control of rate of eggs even if server connection fails
- Tracking of egg densities along cross belts
- Encoders on egg belts and cross belts
- Improved tracking accuracy
- House completion criteria based on belt travel
- Batching for selective blending of houses
- Control of daily schedule for product sequencing
- Sequenced filling and emptying of conveyor
- Ability to select daily case target for each house
- Variable speed control of egg belts
- Cage row switching capability
- Verification of cross-conveyor operations

## REF Safeguards Operation During Daily Runs

- Low egg count alerts
- Jammed egg belt alerts
- Optional immediate shutdown in the case of cross-conveyor problems
- Graphical overview of houses and cage rows
- Graphical overview of conveyor layout and batch locations

## REF Generates Reports On

- Count information (house, tier and row totals)
- Run statistics (stops, rates, and efficiency)
- Cross-belt inventories and batch locations
- Historical egg flow data

## REF Egg Flow is a part of PMSI Integrated Solutions



### ENVIRONMENTAL CONTROL

- Control and monitor every aspect of your environment
- Maximize your feed conversions with feed scales which interface with **CIH**<sup>®</sup> hardware

### EGG FLOW CONTROL

- Egg counting and flow control
- Verification of cross conveyor operations

### HACCP MONITORING AND CONTROL

- Cooler, Rinse water, Wash water temperatures
- Chlorine, PH levels



6425 W. Grand River Ave. | Saranac, MI 48881

Phone: (616) 642-9050 | Fax: (616) 642-9826

[www.pmsi.cc](http://www.pmsi.cc)

Extend Your Reach.